

SPEC SHEET + MEASUREMENTS

PORT AUTHORITY.

Port Authority® Active 1/2-Zip Soft Shell Jacket. J716

Product photo



Our budget-friendly soft shell is made for dashing to the office or for activities like hiking or golfing. A wind- and water-resistant shell joins a breathable mesh liner—giving this jacket transitional, all-season versatility with plenty of stretch for movement.

- 100% polyester knit shell bonded to a water-resistant film insert and a 100% polyester mesh interior
- 3000MM fabric waterproof rating
- 3000G/M² fabric breathability rating
- Reverse coil center front zipper
- Elastic binding at cuffs
- Open hem with adjustable locking drawcord

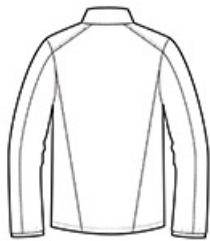
CARE INSTRUCTIONS

Machine wash cold. Gentle cycle. Tumble dry low. Cool iron if needed. Do not bleach. Do not dry clean.

Sketches



front



back

SPEC SHEET + MEASUREMENTS

PORT AUTHORITY

Port Authority® Active 1/2-Zip Soft Shell Jacket. J716

PRODUCT MEASUREMENTS

	XS	S	M	L	XL	2XL	3XL	4XL
Chest	20	21 1/2	23	24 1/2	26	27 1/2	29 1/2	31 1/2
Body Length at Back	27 3/4	28 3/4	29 7/8	31	32 1/8	33 1/4	33 7/8	34 1/2
Sleeve Length from Center Back	35 1/4	36	36 3/4	37 1/2	38 1/4	39	39 3/4	40 1/2

Chest: Measured across the chest one inch below armhole when laid flat.

Body Length at Back: Measured from high point shoulder to finished hem at back.

Sleeve Length from Center Back: Measure from Center Back neck to shoulder point to sleeve hem.

SIZE CHARTS

	XS	S	M	L	XL	2XL	3XL	4XL
Chest	32-34	35-37	38-40	41-43	44-46	47-49	50-53	54-57

SPEC SHEET + MEASUREMENTS

PORT AUTHORITY.

Port Authority® Active 1/2-Zip Soft Shell Jacket. J716

HOW TO MEASURE



CHEST

Measure under the arm and around the fullest part of the chest with arms down, keeping tape horizontal.

COLORS



Deep Black
PMS BLACK
C



Dress Blue
Navy
PMS 533C



Grey Steel
PMS 7540C