

SPEC SHEET + MEASUREMENTS

PORT AUTHORITY.

Port Authority® Northwest Slicker. J7710

Product photo



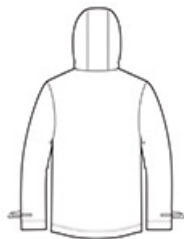
We reinvented our classic rain jacket with this critically seam-sealed slicker that features water resistance, a soft hand feel and reflective details for enhanced visibility and a modern look.

- 100% PU-coated polyester
- 100% polyester mesh-lined body and hood
- 100% polyester-lined sleeves
- 1500MM fabric waterproof rating
- Attached hood with adjustable locking drawcord
- Molded zipper
- Grommets for breathability under arms
- Adjustable self-fabric tab cuffs with hook and loop closures and reflective detail
- Front zippered pockets with reflective detail
- Port Pocket™ for decoration access
- Open hem with adjustable locking drawcord

Sketches



front



back

CARE INSTRUCTIONS

Machine wash cold. Only non-chlorine bleach when needed.
Line dry. Do not iron. Do not dry clean.

SPEC SHEET + MEASUREMENTS

PORT AUTHORITY

Port Authority® Northwest Slicker. J7710

PRODUCT MEASUREMENTS

	XS	S	M	L	XL	2XL	3XL	4XL
Chest	20 1/2	22	23 1/2	25	26 1/2	28	30	32
Body Length at Back	27 1/4	28 1/4	29 1/4	30 1/4	31 1/4	32 1/4	32 3/4	33 1/4
Sleeve Length from Center Back	34 1/2	35 1/4	36	36 3/4	37 1/2	38 1/4	39	39 3/4

Chest: Measured across the chest one inch below armhole when laid flat.

Body Length at Back: Measured from high point shoulder to finished hem at back.

Sleeve Length from Center Back: Measure from Center Back neck to shoulder point to sleeve hem.

SIZE CHARTS

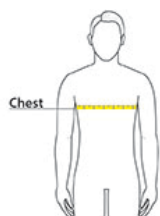
	XS	S	M	L	XL	2XL	3XL	4XL
Chest	32-34	35-37	38-40	41-43	44-46	47-49	50-53	54-57

SPEC SHEET + MEASUREMENTS

PORT AUTHORITY

Port Authority® Northwest Slicker. J7710

HOW TO MEASURE



CHEST

Measure under the arm and around the fullest part of the chest with arms down, keeping tape horizontal.

COLORS



Black
PMS BLACK
C



Navy
PMS 532C



Northern Grey
PMS 424C



Slicker Yellow
PMS 1235C